

2020 Crow Wing County AIS Prevention Plan and Water Planning Wrap-up Presentation

October 28th, 2020



Topics Covered Today

- ▶ County presentation - 2020 AIS Prevention Plan
 - ▶ Significant changes, accomplishments, and planning process
 - ▶ Watercraft inspector training, implementation, and relevant inspection/ decontamination data
 - ▶ AIS educational moments, AIS behaviors change survey results, and AIS prevention plan activities
 - ▶ AIS social media awareness Minnesota Traditions (MHB) - Tim Terrill
 - ▶ Lake association feedback and listening session topics include: inspections, decons., education & awareness, milfoil treatments, and other.
 - ▶ Next steps - CWC AIS Prevention Plan develop process for 2021
 - ▶ CWC role in the Pine River One Watershed, One Plan
 - ▶ Lake Improvement Districts - updates
 - ▶ CWC and SWCD PRAP process - next steps
 - ▶ Wrap-up and final questions



2020 Significant changes and accomplishments

- ▶ Partnership with the U of MN Aquatic Invasive Species Research Center (MAISRC) and United States Forest Service (USFS):
 - ▶ Number of watercraft moving from infested lakes to uninfested lakes (derived from MAISRC research and MN-DNR watercraft inspection field-collected data). This includes estimates of watercraft moving from:
 - ▶ Location of infested and uninfested lakes
 - ▶ Within the county
 - ▶ Within the county to outside the county
 - ▶ Outside the county to within the county
 - ▶ Average boats per-hour inspected (2016-19) at 50 ramps infested lakes in Crow Wing County.
 - ▶ MAISRC will have this decision-making tool for optimal management of AIS to help AIS managers prioritize their resources available to the public in November 2021.



2020 Significant changes and accomplishments

- ▶ Increased watercraft inspection hours by 340 from 2019 to 2020.
- ▶ Purchased a mobile decontamination unit to provide more locations for boaters.
- ▶ During peak season, employed 60 watercraft inspectors and provided hands on inspection training, education materials, AIS ID quiz, equipment hand-out with the COVID-19 pandemic present.
- ▶ Sent Bi-weekly emails to Lake associations / LIDs with relevant AIS and water quality information.
- ▶ Crow Wing County switched from using an employment agency for the hiring and scheduling of inspectors to handling these assignments in-house in 2019. Hired a full-time permanent Environmental Services Specialist to coordinate the County's AIS prevention program.

Newly AIS Infested Lakes in Crow Wing County

2020

- ▶ Lakes infested with AIS in CWC in 2020: 6; Armour #2 Mine (zebra mussels), Louise Mine Pit (zebra mussels), Tame Fish Lake (zebra mussels). All waterbodies are connected to infested zebra mussel lakes/ rivers.

2019

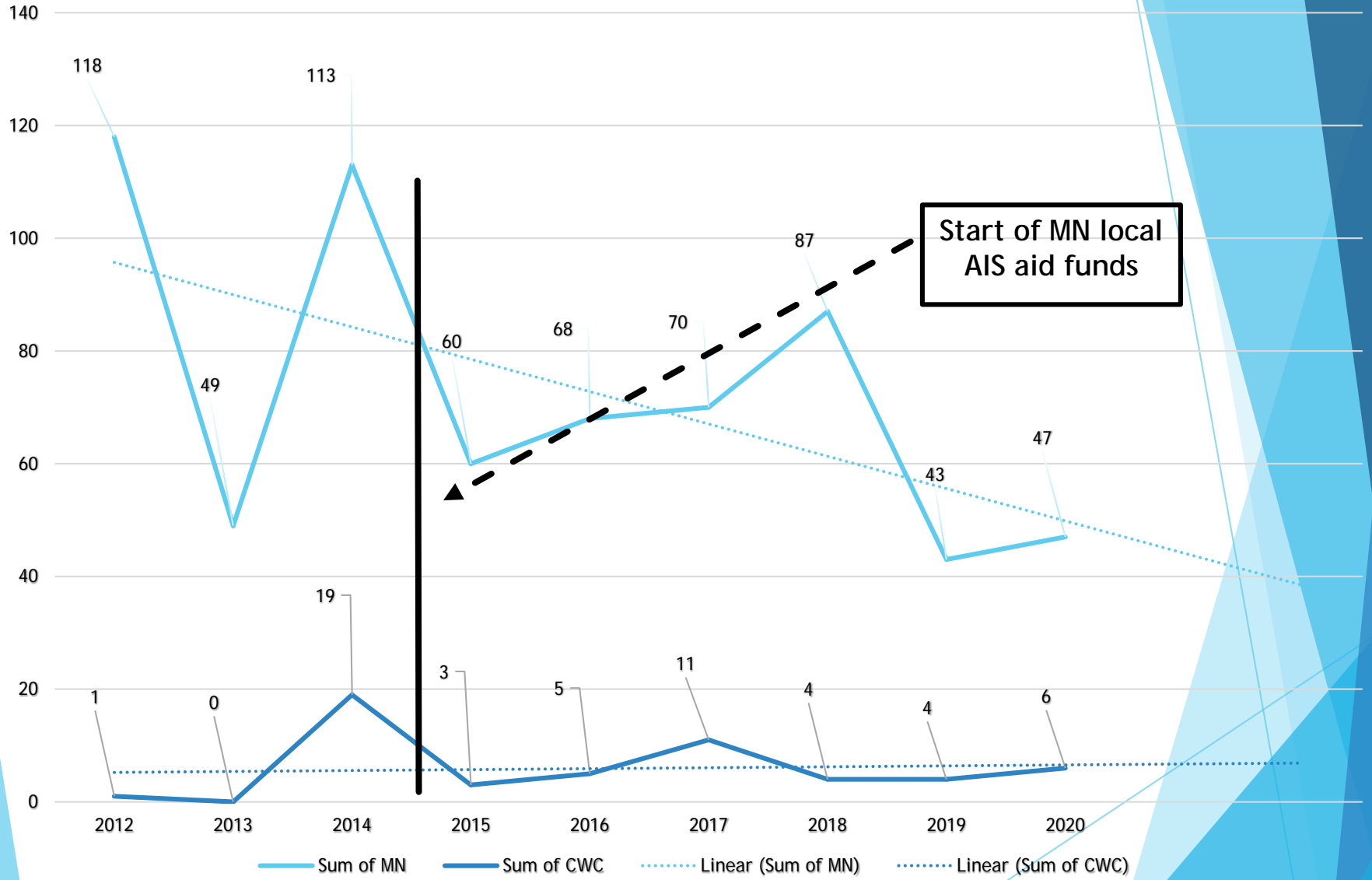
- ▶ Lakes infested with AIS in CWC in 2019: 1; Upper South Long (Eurasian watermilfoil).

2018

- ▶ Lakes infested with AIS in CWC in 2018: 4; Bay Lake (zebra mussels), Crooked Lake (Eurasian watermilfoil), Cullen Brook (zebra mussel), Middle Cullen Lake (zebra mussel).



Newly Infested designated AIS Water Bodies in MN vs. CWC (as of 10/19/2020)



2020 CWC AIS Prevention Planning Process

- ▶ September 2019 State of Minnesota allocated \$443,109 to CWC for local AIS prevention aid funds
- ▶ \$383,601 allocated for watercraft inspections with 17,040 watercraft inspections hours on 42 public access landings across the County

▶ Results of model:

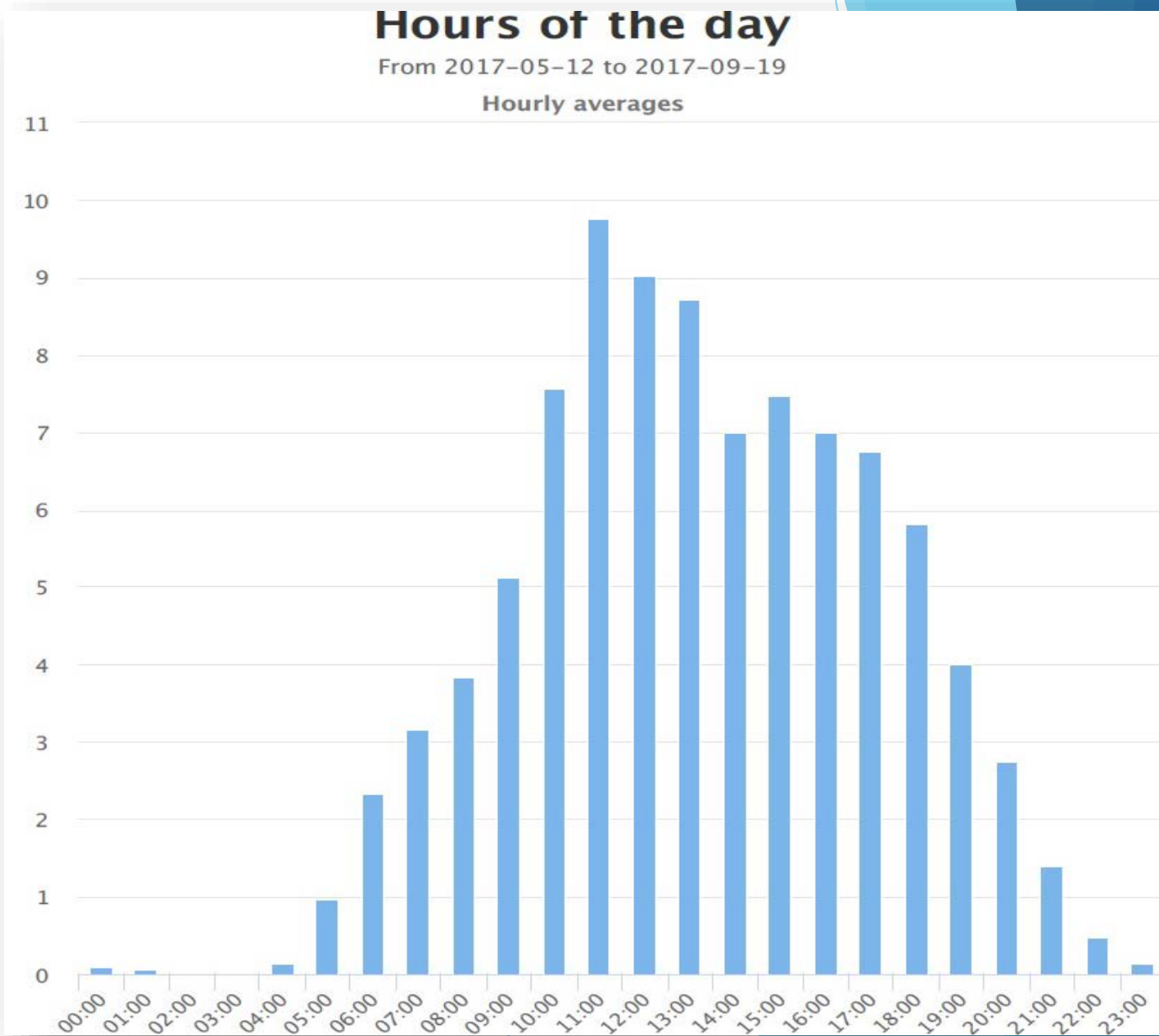
- ▶ 32 public access ramp landings identified
- ▶ Predicts coverage of at least 85% of watercraft moving from infested to uninfested water bodies.
- ▶ Best prioritization of landings when inspecting zebra mussel infested lakes with a lot of boat traffic and...
- ▶ Zebra mussel uninfested lakes with a lot of incoming traffic from out of the county.
- ▶ County added 10 additional landings not identified in the model, based on high-use landings and one (1) new landing never before inspected.
- ▶ Total landings to inspect = 42

2020 CWC AIS Prevention Planning Process

- ▶ Primary breakdown:
 - ▶ 520 hours to landings that received at least 2 inspections per-hour (from 2017-19 County inspection data) and also appeared in the model's results (22 landings).
 - ▶ 300 hours to landings that received at least 1 inspections per-hour (from 2017-19 County inspection data) and also appeared in the model's results (9 landings).
 - ▶ 300 hours to the 10 highest average inspections per-hour landings that had at least 1 inspections per-hour (from 2017-19 County inspection data) and were not identified in the models results (10 landings).
 - ▶ 100 hours to the next two (2) highest inspections per-hour landings not included in the model (2 landings) or above and were also infested with AIS. Plus, one (1) landing that is new in 2018 on Nisswa Lake where inspection data gathering is needed.
 - ▶ Any landings identified in the model that had less than one (1) average inspection per hour (from 2017-19 County inspection data) were removed from consideration for watercraft inspections regardless of other considerations.

2020 CWC AIS Prevention Planning Process

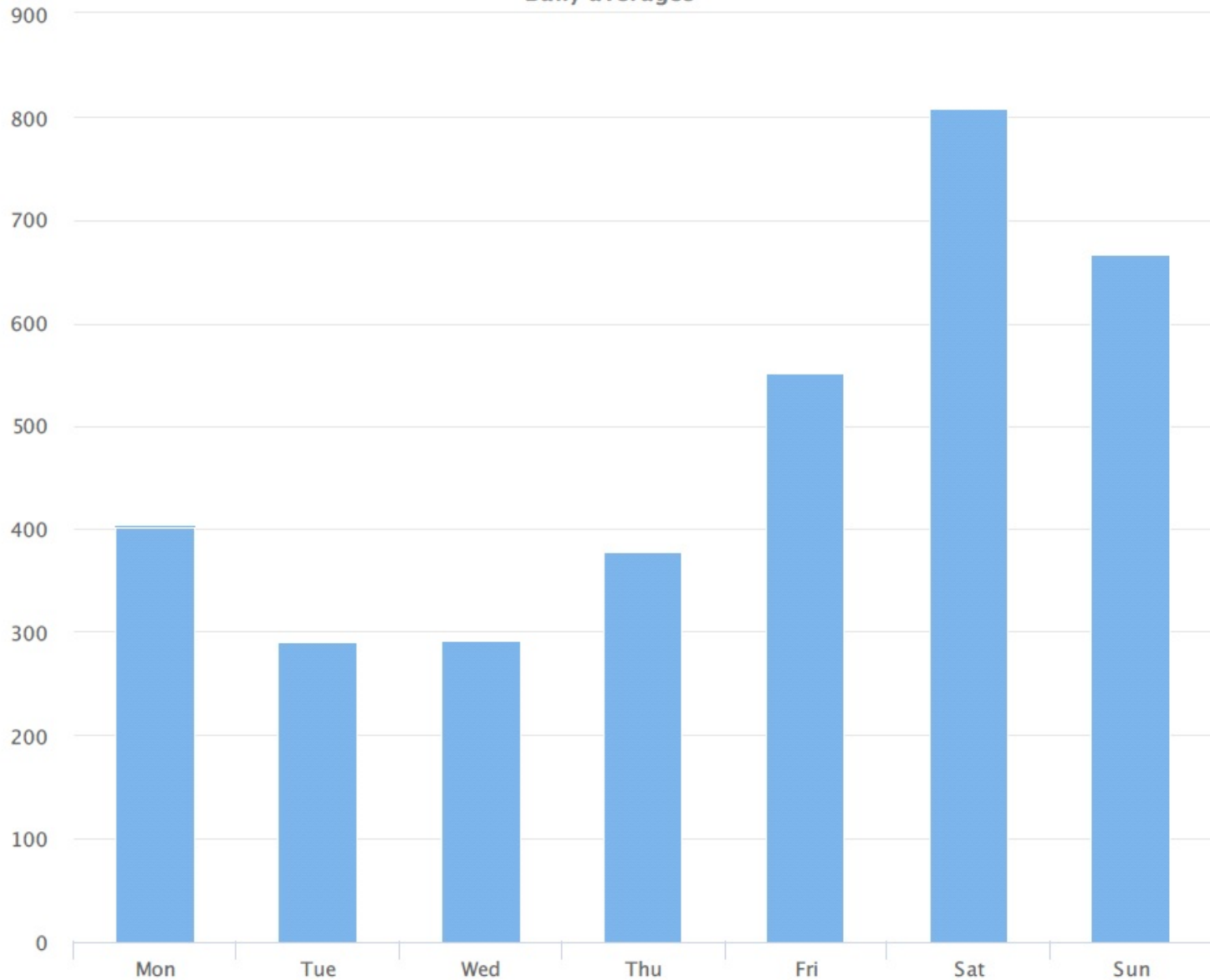
- ▶ Car counters buried at 26 public access landings in 2019
- ▶ Helps us understand peak landing usage
- ▶ Used to formulate good staffing / shift times



Days of the week

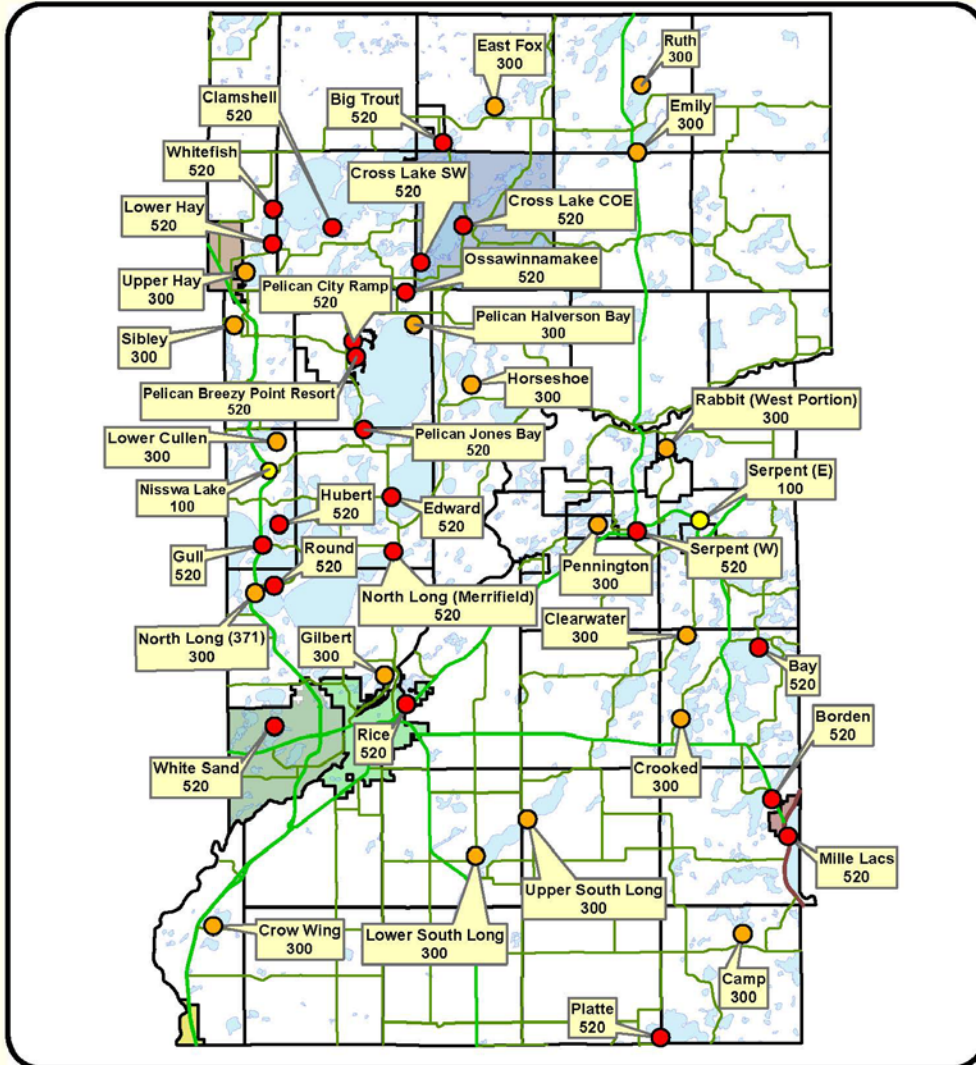
2018-05-14 to 2018-10-10

Daily averages



Site Name	Average	Median	STDV	Min	Max
Cross - Campground	484.4	403.1	183.6	290.0	809.0

2020 Crow Wing County Watercraft Inspection Hours



0 3.25 6.5 13 Miles

1 inch = 6 miles
 Crow Wing County
 Land Services Department
 322 Laurel Street, Suite #15

For non-legal, reference use only

218-824-1010



Cities	
	Baxter
	Brainerd
	Crosslake
	Fort Ripley
	Garrison
	Jenkins

Allocated Inspection Hours	
	520 (Fri-Sun, 9-6)
	300 (Sat-Sun, 9-5)
	100 (Wkends, 9-7)

2020 CWC AIS Prevention Planning Process

- ▶ Staffing hours:
 - ▶ 520 hour lakes: 9:00am to 6:00pm, Friday - Sunday, May 15th through Mid - Sept, plus federal holidays
 - ▶ 300 hour lakes: 9:00am to 5:00pm, Saturday and Sunday, May 16th through Mid - Sept, plus federal holidays
 - ▶ 100 hour lakes: 9:00am to 7:00pm, 10 weekend / holiday days during the season.
 - ▶ Times vary on lake association expanded coverage request landings
- ▶ Staffing priorities
 - ▶ Staff 520 hour lakes first
 - ▶ Staff 300 hour lakes second
 - ▶ Staff 100 hour lakes third
 - ▶ Staff lake association requested expanded fourth
 - ▶ Staff non-county allocated hour landings last

2020 AIS Inspection pay rate for expanded coverage

- ▶ Over 5,000 hours of lake association extended hours coverage in 2020
- ▶ In the past, with a staffing agency (Panmac) billable rate costs were \$17.58 and \$19.02.
- ▶ This year, being all in-house, billable rate costs were \$15.42 and \$16.52.
- ▶ **Lake Associations are saving money!!**
- ▶ Example: Crooked Lake asked for 70 hours expanded coverage.
 - ▶ $\$19.02 * 70 = \$1,331.40$
 - ▶ $\$16.52 * 70 = \$1,156.40$
 - ▶ Saved \$179 for more inspections 😊

2020 Inspections per hour examples

	2020-H	2020-I	2020-I/H	2019-H	2019-I	2019-I/H	2018-H	2018-I	2018-I/H		Average
Bay	1417.5	3708	2.62	1371	3687	2.69	1611.5	4097	2.54		2.62
Big Trout+++	1175	3635	3.09	1076	2984	2.77	1012.8	2387	2.36		2.74
Borden	521	1119	2.15	300	723	2.41	300	614	2.05		2.20
Camp	300	730	2.43	300	545	1.82	300	484	1.61		1.95
Clamshell+++	580	1673	2.88	553	1376	2.49	520	1340	2.58		2.65
Clearwater	298.5	654	2.19	300	559	1.84	300	651	2.17		2.07
Crooked	419.5	626	1.49	370	532	1.44	300	454	1.51		1.48
Crosslake - USCOE Campground+++	1006	3842	3.82	891.5	3040	3.41	1043	3477	3.33		3.52
Crosslake SW+++	1121.5	3629	3.24	955	2676	2.8	874	2673	3.06		3.03
Crow Wing	300	712	2.37	300	660	2.2	300	430	1.43		2.00
Eagle*	88	79	0.90	148.5	104	0.7	146.3	133	0.91		0.84
East Fox*	300	640	2.13	300	372	1.24	300	433	1.44		1.60
Edward	520	1462	2.81	520	1346	2.59	520	1212	2.33		2.58
Emily	300	706	2.35	300	470	1.57	300	508	1.69		1.87
Gilbert	300	612	2.04	300	405	1.35	300	327	1.09		1.49
Gladstone	104	174	1.67	142	186	1.31	300	381	1.27		1.42
Gull East	520	2620	5.04	520	2372	4.56	520	2490	4.79		4.80
Horseshoe	510	1085	2.13	501	1106	2.21	518.3	1155	2.23		2.19
Hubert	1281	2720	2.12	1345.5	2575	1.91	814.3	1945	2.39		2.14
Kego *	160	227	1.42	228	253	1.11	192.5	317	1.65		1.39
Kimball	238	215	0.90	215	188	0.087	300	269	0.90		0.63
Lower Cullen	300	686	2.29	300	555	1.85	300	443	1.48		1.87
Lower Hay	1109	3856	3.48	969	3152	3.25	975.8	2979	3.05		3.26

Crow Wing County training information

- ▶ The County created four online training videos with quizzes that were ready for inspectors to view by May 1st.
- ▶ The County also had two days of hands-on inspection training, an AIS Identification quiz, and equipment pick-up with less than ten inspectors per-group.
- ▶ The County also developed a new COVID-19 protocol for inspectors to provide safety at the lake accesses.
- ▶ Received a lot of compliments from watercraft inspectors about the County online training videos.



MN DNR Level One Training Information

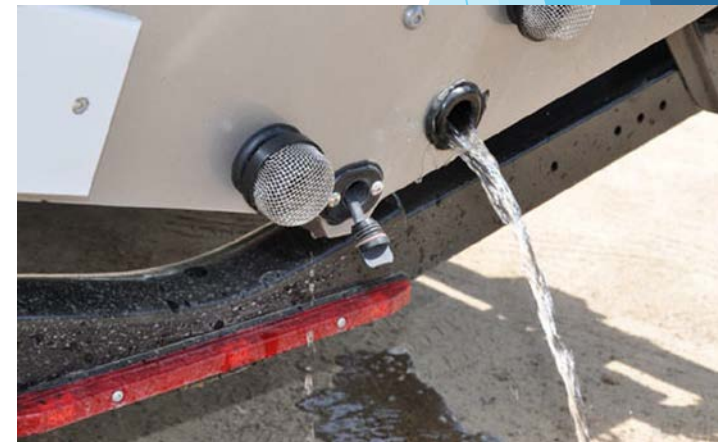
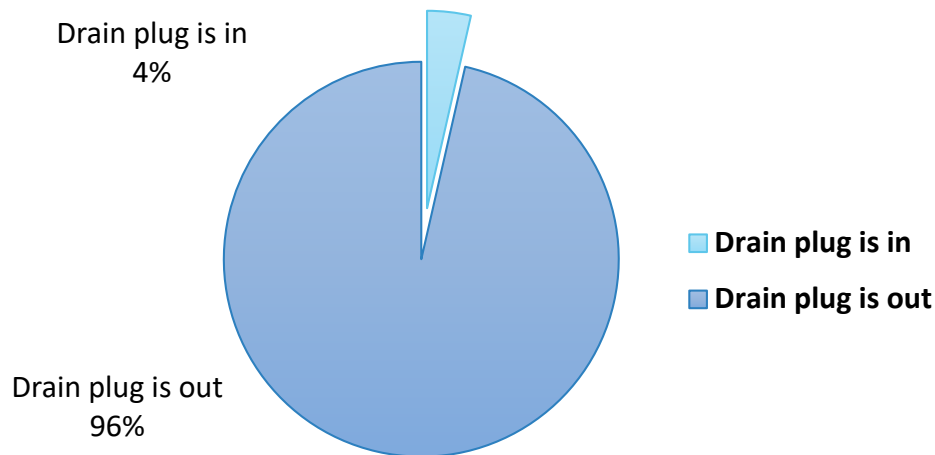


- ▶ The MN DNR provided level one watercraft inspector training on May 1st.
- ▶ Level one watercraft inspector training Typically occurs beginning in April.
- ▶ Due to a late start on providing level one training, CWC watercraft inspectors weren't able to start our inspection program until May 15th. This was the weekend after fishing opener, which is our normal starting weekend.

2020 CWC AIS Watercraft Inspection Data (as of 10/19/2020)

- Last inspection weekend day was October 4th, 2020
- 2020, Crow Wing County performed a total of 64,119 watercraft inspections and accomplished 22,001 watercraft inspection hours.
- 2019, Crow Wing County performed a total of 49,474 watercraft inspections and accomplished 20,830 watercraft inspections hours.
- **14,645 more inspections performed in 2020 compared to 2019!!**
- 2020, average of 1,100 hours/ week of watercraft inspections hours
- 2019, average of 994 hours/ week of watercraft inspections hours
- In 2019, Drain plug compliance was lower by 2% vs. 2020.

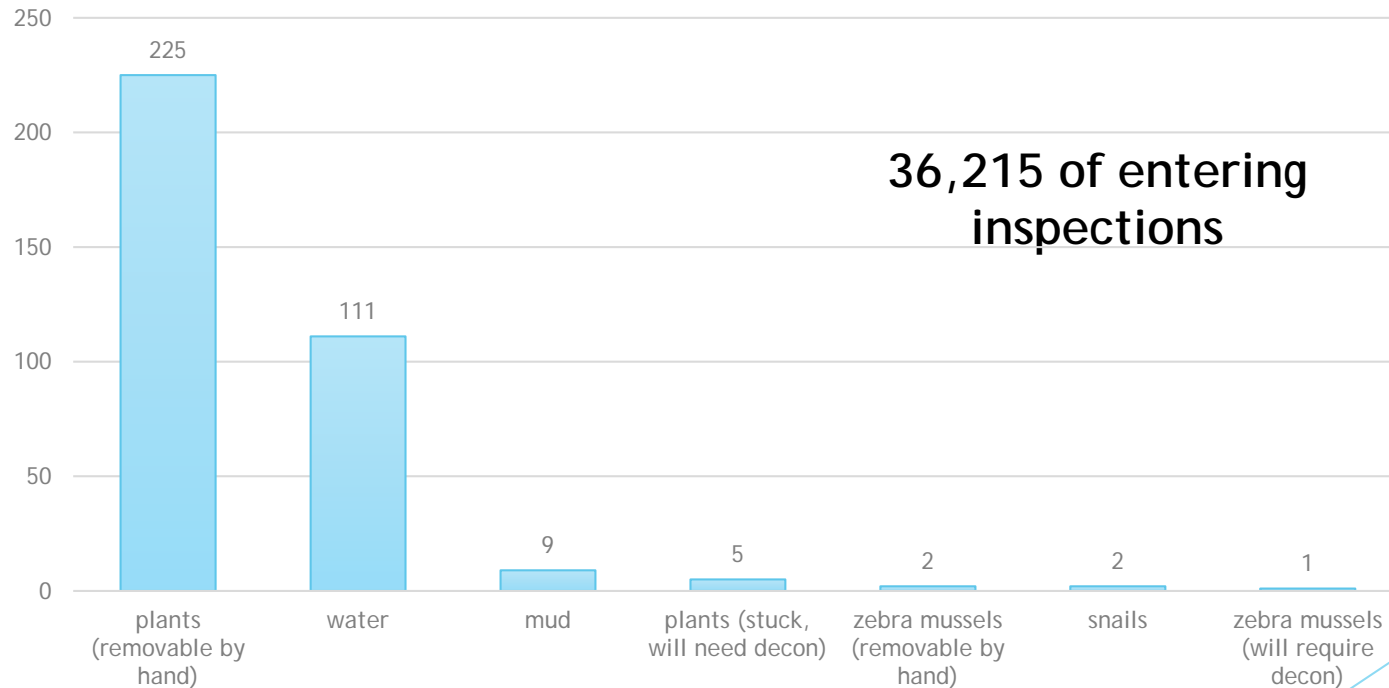
Drain Plug Compliance in 2020



2020 CWC AIS Watercraft Inspection Data (as of 10/19/2020)

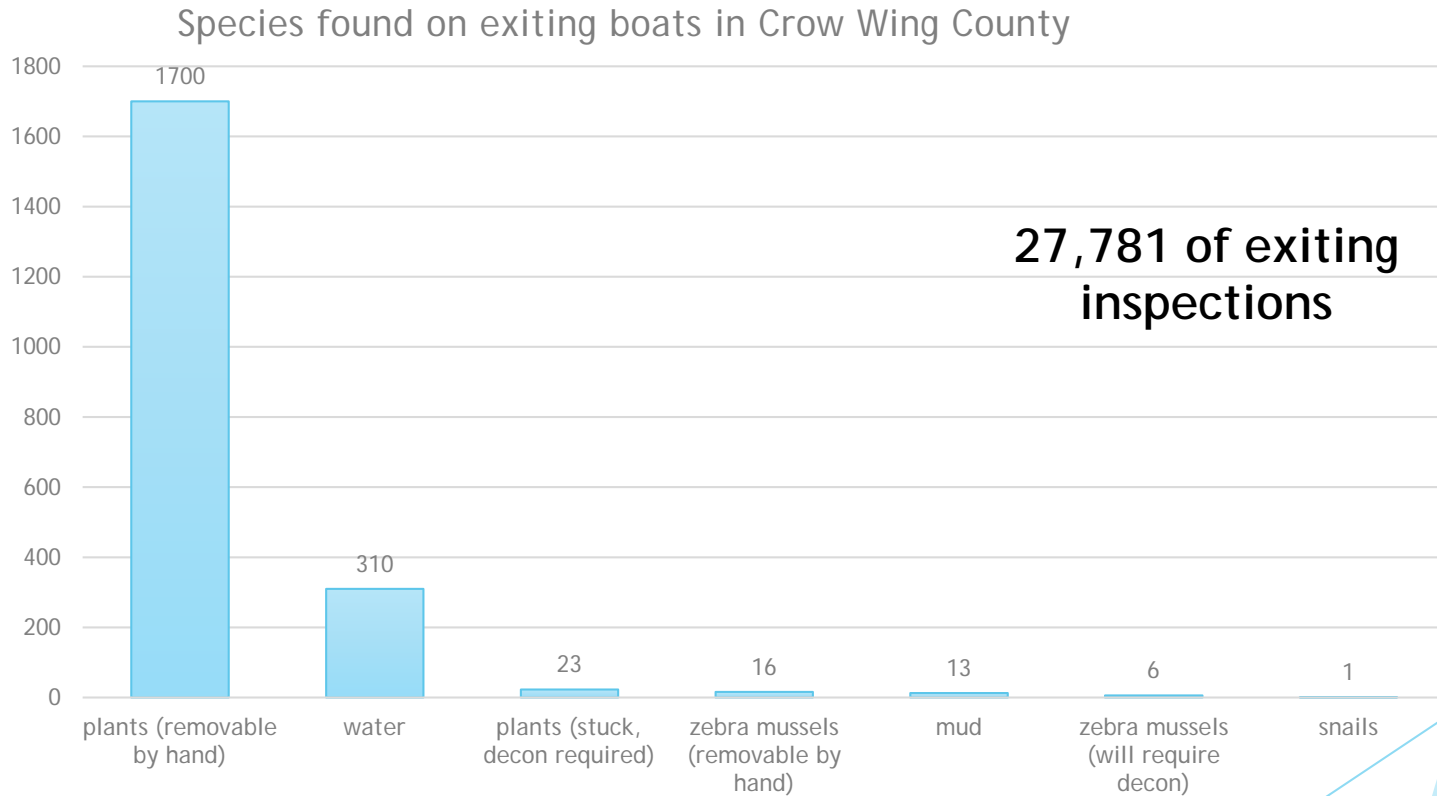
<1% plants were found on entering boat traffic

Species found on incoming boats in Crow Wing County



2020 CWC AIS Watercraft Inspection Data (as of 10/19/2020)

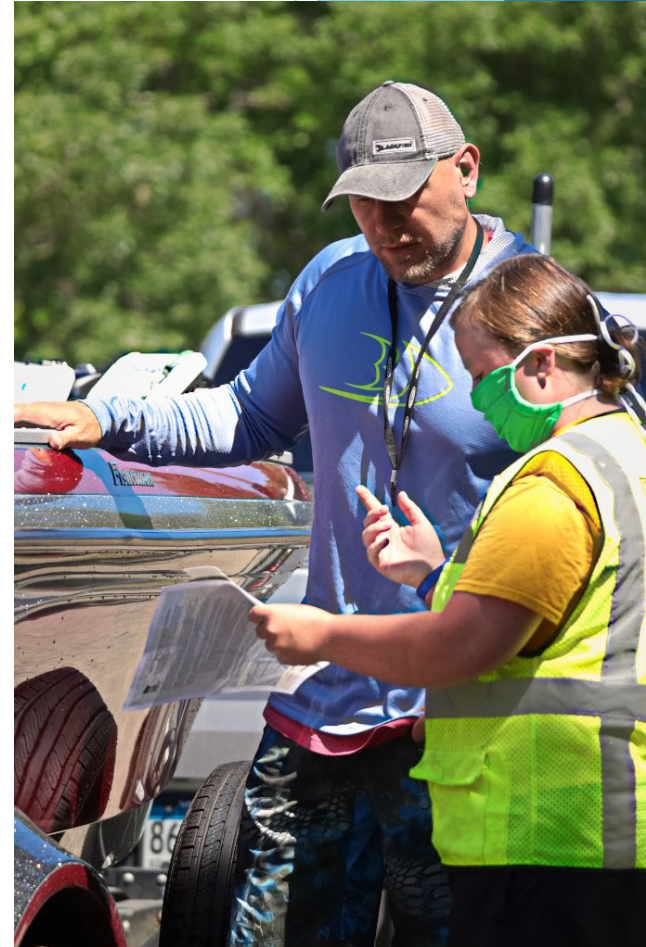
<1% Zebra Mussels were found during exiting inspections



Fishing Tournaments in Crow Wing County

▶ In total the County has worked around 8 different fishing tournaments in 2020. Here are the following lake accesses and dates:

- ▶ Bay Lake - June 6th
- ▶ Lower Hay and Big Trout - June 14th
- ▶ North Long - Merrifield - June 21st, also provided the mobile decon
- ▶ Upper South Long - June 27th
- ▶ Rice Lake - Lum Park - August 8th
- ▶ Lower Hay, Big Trout, and Crosslake SW - August 12th and 13th
- ▶ Mille lacs lake - August 23rd
- ▶ Gull East August - 29th



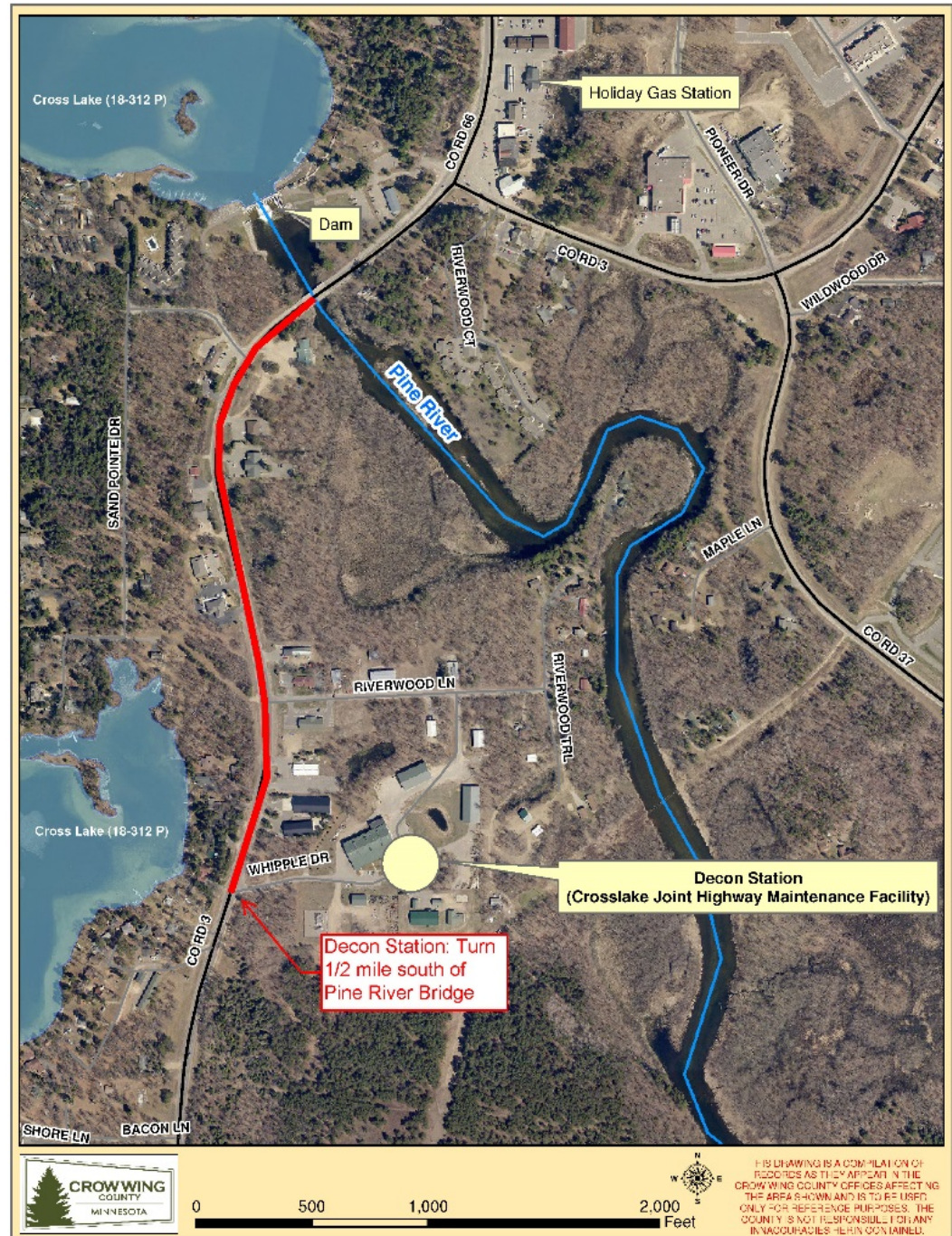
MN DNR level two training information

- ▶ The MN DNR provided “returning” inspectors level two training on May 15th.
- ▶ The challenge that the county faced was only one level two trained inspector returned from last year.
- ▶ Due to this challenge, the County took it upon themselves to provide hands-on level two training with new inspectors to operate the Crosslake and mobile decon stations.
- ▶ The MN DNR provided “new” inspector level two training on July 21st.
- ▶ The MN DNR worked with the County to provide hybrid hands-on training with new level two inspectors as soon as training was available



2020 CWC AIS Decontamination Data

- ▶ Decontamination:
 - ▶ Allocated \$41,928
 - ▶ Permanent decon. station located just south of the USACOE recreation site in Crosslake.
 - ▶ Operated 5/22 through 9/27
 - ▶ 608 Decon. Hours
 - ▶ Fully staffed Thursday through Sunday, 9:00am to 5:00pm
 - ▶ No on-call in 2020
- ▶ Performed 225 Decontaminations as of 10/19/2020



Crosslake Decontamination Station



2020 CWC AIS Decontamination Data

▶ Decontamination:

- ▶ Mobile decon station was located at various DNR approved accesses throughout the county
- ▶ Operated 6/13 - 9/27
 - ▶ 391 Decon. Hours
 - ▶ Fully staffed Friday through Sunday, 9:00am to 5:00pm
- ▶ Performed 128 Decontaminations as of 10/19/2020



Crow Wing County Mobile Decon

- ▶ The MN DNR approved the CWC mobile decon station to be placed at the following lake accesses:

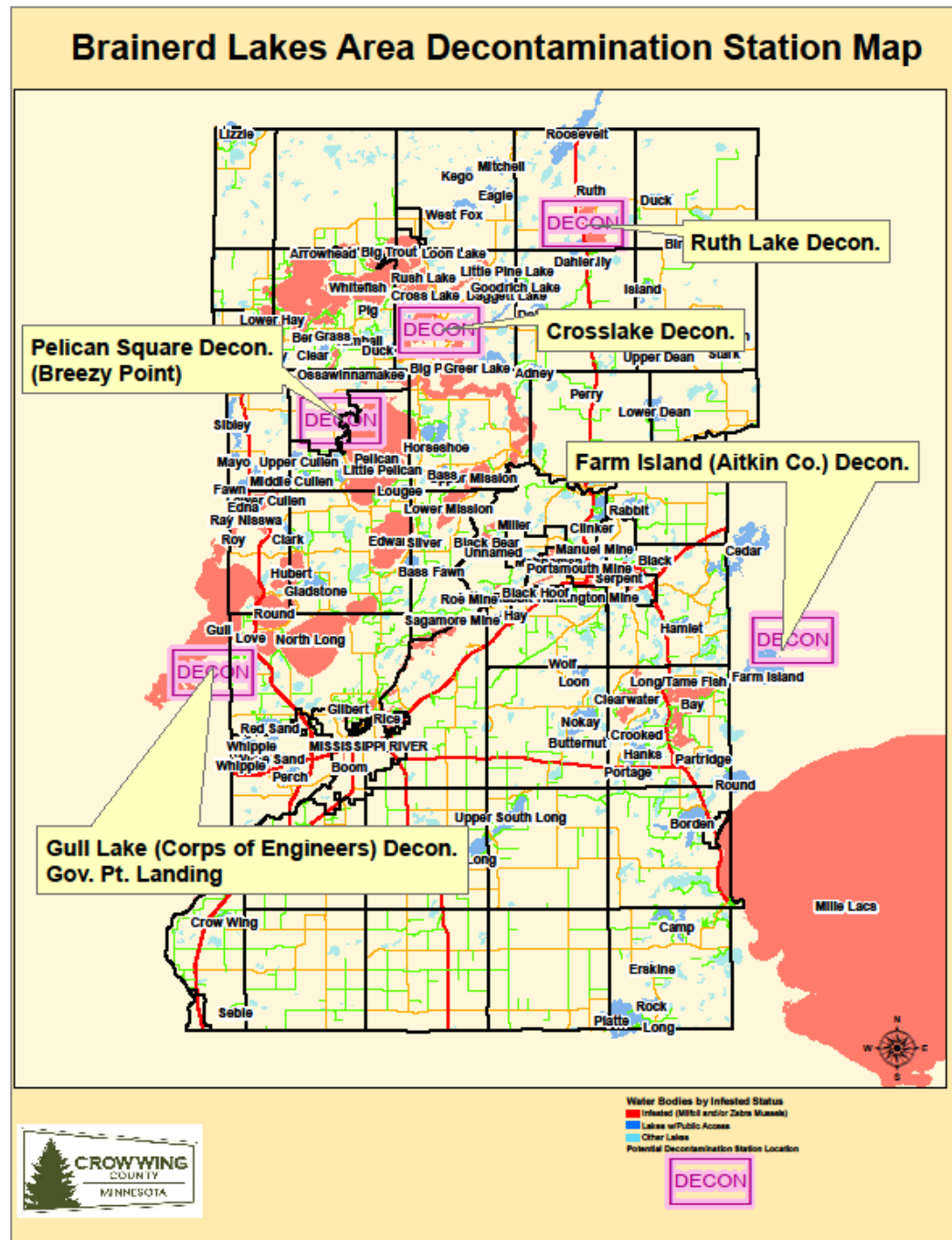
- ▶ Lower Cullen, Pelican - Halverson Bay, Upper South Long, Edward, and Lower Hay.

- ▶ The CWC mobile decon station is limited to these lake accesses because we don't have a reclaim mat to recycle water.



2020 CWC AIS Decontamination Data (10/19/2020)

- ▶ Pelican Square (Breezy Point)
 - ▶ Closed for the 2020 season
 - ▶ Attempted to work with Pelican Lake Association to perform decons.
- ▶ Ruth Lake
 - ▶ 124 decontaminations
- ▶ Spirit Lake / Farm Island (Aitkin Co.)
 - ▶ unknown
- ▶ Gull Lake (USACOE launch)
 - ▶ 102 decontaminations



AIS Educational Moments 2020



Pop Can with zebra mussels found by a scuba diver on Pennington Mine.

Draining kayaks properly before transport at Pennington Mine.

AIS Educational Moments 2020



Zebra mussels found on Anchor from a boater who and how to properly remove them on Crow Wing Lake.

Drying Live-well properly with a boater before leaving the access on Crow Wing Lake.



AIS Educational Moments 2020



Mobile Decon with a boater in a fishing tournament on the procedure of a proper decon to kill AIS on North Long Lake.

Eurasian Water Milfoil identification and teaching the affects it has on our lakes with a club scout member on Bay Lake.



AIS Educational Moments 2020



Working with Lake Service Providers and how to decon a pontoon properly. This company rents 18 pontoons every weekend and they are very conscientious about cleaning these rentals before/ after use on Gilbert Lake.

AIS Educational Moments 2020



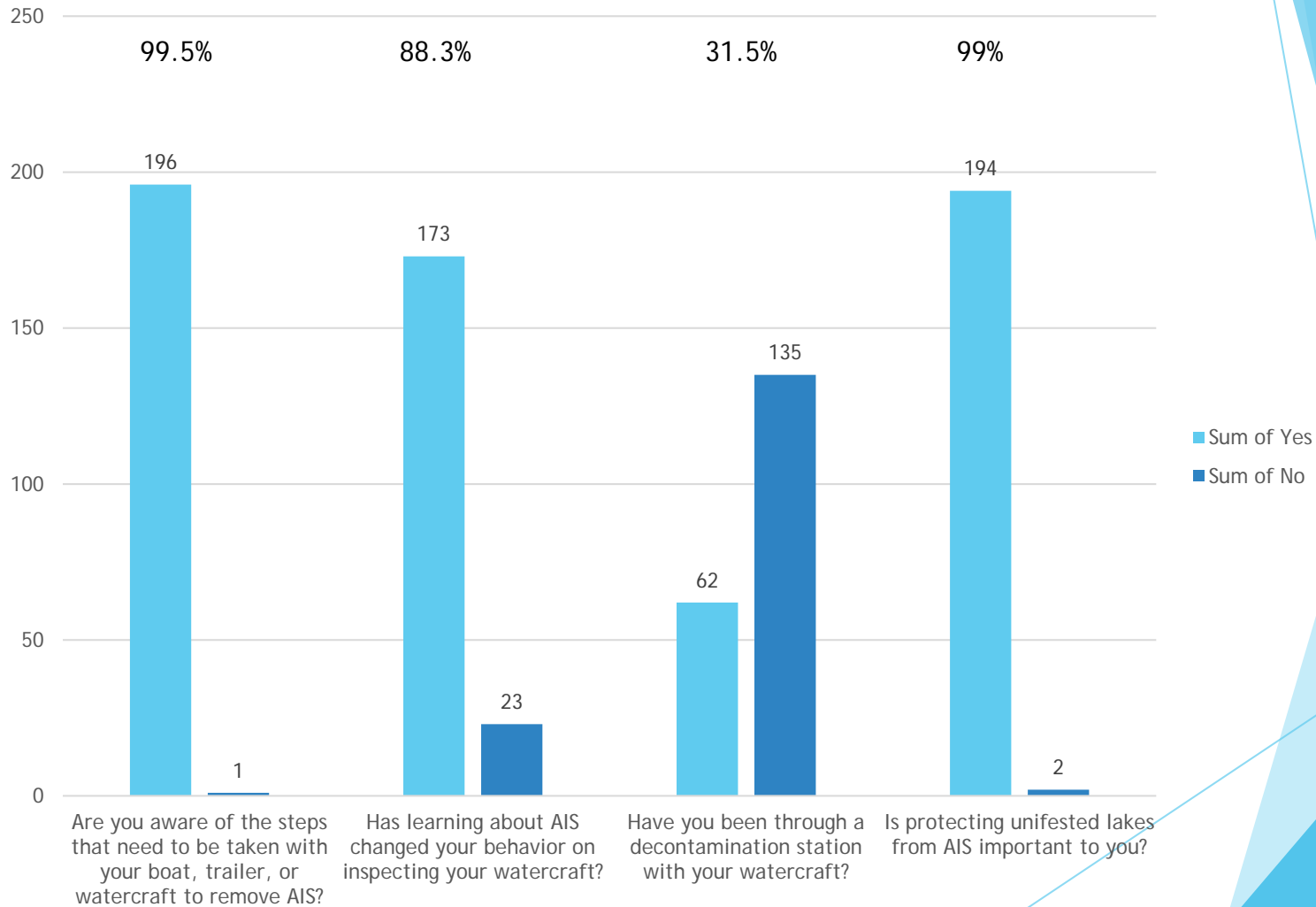
Working with a boater's water plane and how to perform a proper inspection on Big Trout Lake.

Performed a full Inspection on a toy boat with a young boy on how to look for AIS on a watercraft at Lower Cullen Lake.

2020 CWC AIS Survey Results

▶ Out of 400 surveys 197 responded

▶ Percentages are based on the boaters responses that answered "yes" to the following questions



2020 CWC AIS Survey Results

- ▶ Boaters marked the following actions that they have changed when self-inspecting their watercraft for AIS.

Avoid boating in AIS infested water bodies.
8%

Drain water from boats, live well, bait container, and lower motor unit.
17%

Boat or fish only on one lake every 5 days.
10%

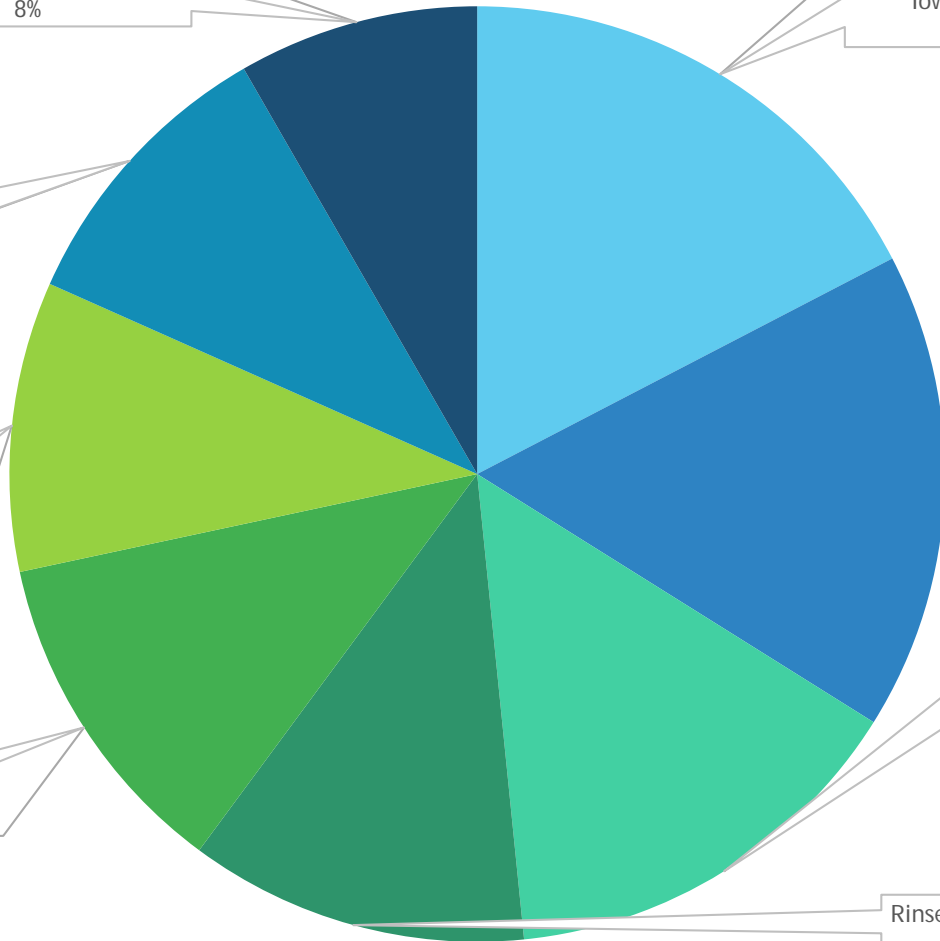
Physically remove AIS from boats, trailers and equipment.
17%

Flush motor's cooling system with water,
10%

Avoid release of unwanted bait into water.
14%

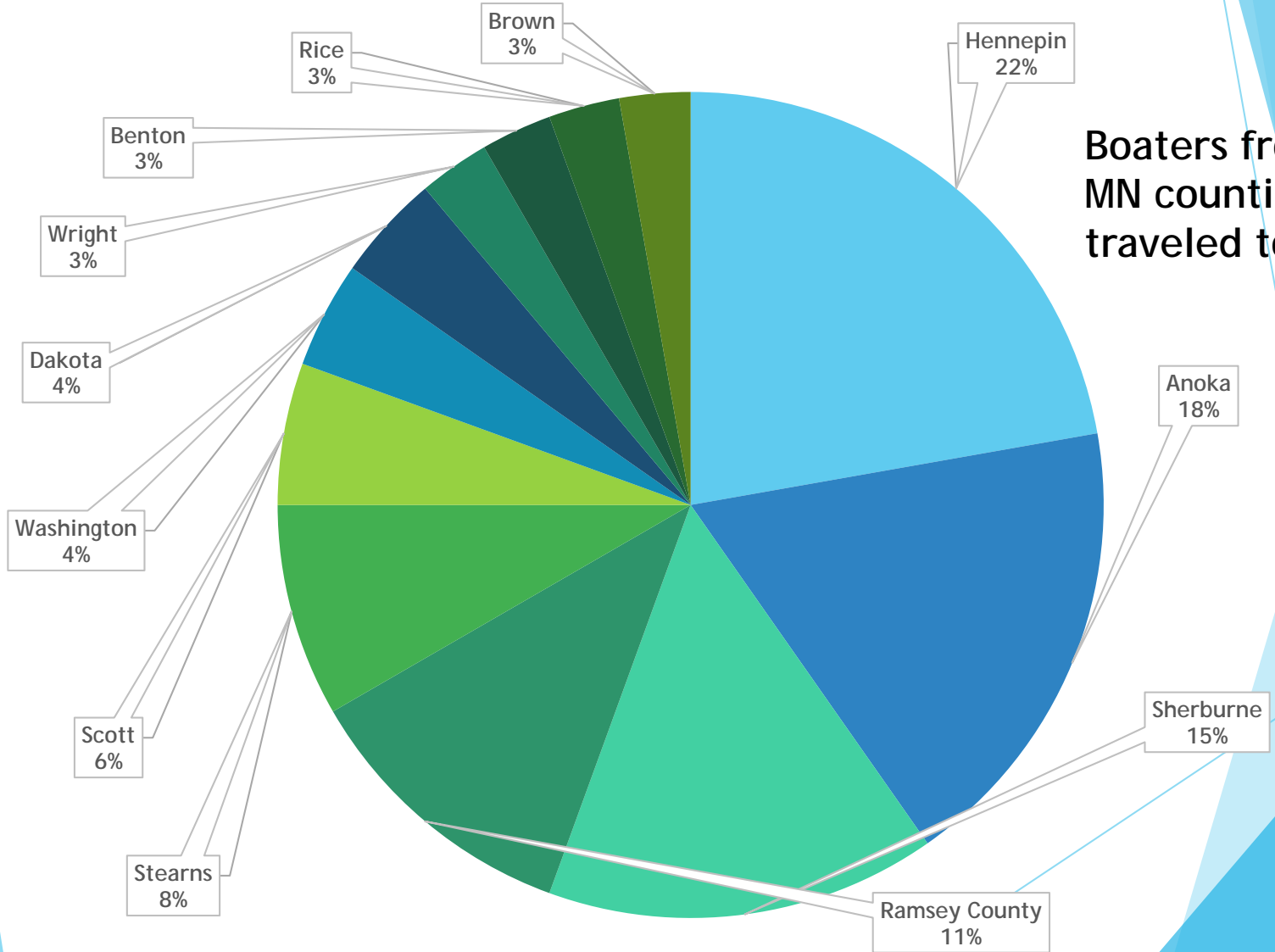
Dry boat with a towel or allow boat to dry for at least 5 days.
12%

Rinse boat with high pressure and/or hot water.
12%



2020 CWC AIS Survey Results

Most Visited MN Counties in Crow Wing County



Boaters from 22 MN counties traveled to CWC

2020 CWC AIS Prevention Plan Activities

▶ Education and awareness: \$14,100

- ▶ Social media awareness (Minnesota Traditions / MHB)
- ▶ 18 lakes for lake association public awareness grants (\$250 per lake with a boat landing). Currently, 8 lakes have taken advantage of the \$250 and WAPOA just submitted their grant information for review.
- ▶ Starry Trek

▶ Milfoil treatment: \$33,000

- ▶ \$3,000 per-lake for treatment and surveying of EWM on 10 eligible lakes which include Bay, Clearwater, **Crooked (combined with Portage/Hanks)**, Emily, **Kimble**, Lower & Upper Mission, Ossawinamakee, Ruth, White Sand, Upper South Long (2019).
- ▶ **Highlighted in blue are the lakes the County has received EWM treatment grants from currently.**

▶ Early AIS Detection: \$4,500

- ▶ 20 Zebra mussel veliger and 25 spiny water fleas testing occurred in 2020.



Crow Wing County Decon. Hotline Cards

Hand-out cards advertising decontaminations (wallet + rack cards) handed out at landings and all public appearances



**PROTECT
OUR LAKES!**

Call hotline for Decontamination locations
DECON HOTLINE 218-824-1055



crowwing.us

Lake association public awareness grants

- ▶ \$4,500 allocated on a first come first serve basis.
- ▶ 18 lakes for lake association public awareness campaigns (\$250 per lake with a boat landing) this includes: Currently, 10 lakes for AIS awareness grants are available.
 - ▶ hand-outs at the landing (i.e., bait bags, towels, etc.)
 - ▶ print media (rack cards, newspaper ads, stickers, posters, etc.)
 - ▶ newsletter(s)
 - ▶ other targeted advertising (movie theaters, online, etc).



**STOP AQUATIC
HITCHHIKERS!™**

Be A Good Steward.
Clean. Drain. Dry.

StopAquaticHitchhikers.org

Crow Wing County Starry Trek 2020

- ▶ 10 volunteers
- ▶ Searched 23 public lake accesses
- ▶ No Starry Stonewort Found!!
- ▶ Did find multiple Chinese banded Mystery snails



Social media awareness (Minnesota Traditions / MHB)

Minnesota Traditions - Social Media Summary for September 2020

38,693 total page likes for September

Campaign Performance

<p>Fishing</p> <p>110,413 impressions</p> <p>58,241 reach</p> <p>206 page likes</p> <p>353 link clicks</p> <p>79 post shares</p> <p>492 reactions</p>	<p>Waterfowl</p> <p>98,937 impressions</p> <p>50,872 reach</p> <p>426 page like</p> <p>351 link clicks</p> <p>50 post shares</p> <p>680 reactions</p>
<p>Dock/lifts</p> <p>108,939 impressions</p> <p>51,987 reach</p> <p>281 page likes</p> <p>291 link clicks</p> <p>32 post shares</p> <p>202 reactions</p>	<p>Boating/sailing</p> <p>60,963 impressions</p> <p>24,572 reach</p> <p>207 page likes</p> <p>144 link clicks</p> <p>24 post shares</p> <p>266 reactions</p>

Campaign Totals

378,712 impressions
185,672 reach

1,120 page likes
1,101 link clicks

185 post shares
1,640 reactions

Minnesota Traditions - Social Media Summary for September 2020

8,049 followers for September

15.5k impressions per day in September!

98 followers for September
152 impressions

Top Tweet earned 1,139 impressions

It's a family tradition. A Minnesota Tradition. We all have a passion for the great outdoors. For all of us, it's the understanding & actions taken to keep our lakes & rivers free from what doesn't belong there.
#AISawareness #MNTraditions #hunting #fallhunting #waterfowlhunting pic.twitter.com/1YGIJn4EJB

Tweet Impressions

139,583 waterfowl
99,294 docks/lifts
99,349 fishing
119,509 boating/sailing
totals: **457,735**

Audience for September Campaigns

64.9% MALE
30.9% FEMALE
4.2% UNKNOWN

Post Insights 41% weren't following mntraditions

34 reach
39 impressions
25 from home
11 hashtags
3 from profile

- ▶ Commit approximately \$8,600 of this allocation to continue its important partnership with the Mississippi Headwaters Board (MHB) through their Minnesota Traditions AIS prevention campaign
- ▶ Six counties supporting this campaign including Crow Wing, Cass, Morrison, Aikin, Todd, Douglas, and Beltrami.
- ▶ Also, articles and video were processed on AIS awareness and prevention.
<https://www.facebook.com/MinnesotaTraditions/videos/2459736587463265>

Lake Association Feedback

- ▶ How did things go on your lake or with this plan in 2020?
- ▶ Inspection successes:
 - ▶ Lake associations appreciated the hours allocated for inspections.
- ▶ Inspection missed opportunities:
 - ▶ Opportunities for increased signage about decon. Locations, posted at landings when inspectors are not present.
 - ▶ Opportunities for making it clearer the process for partners to have hand-outs at landings for inspectors, and how the vetting process works.

Lake Association Feedback

- ▶ Decontamination successes:
 - ▶ Addition of mobile decontamination station / unit was an enhancement / benefit.
- ▶ Decontamination missed opportunities:
 - ▶ Increased communication to lake associations / partners concerning decontamination locations.
 - ▶ Opportunities for increased signage about decon. Locations, posted at landings when inspectors are not present.

Lake Association Feedback

- ▶ Education and awareness successes:
 - ▶ Lake associations appreciate the \$250/landing small grants.

- ▶ Education and awareness missed opportunities:

Lake Association Feedback

- ▶ Milfoil successes:
 - ▶ Lake associations appreciated the continued support of the County to provide for Milfoil treatment, supplementing the DNR's grant(s).
- ▶ Milfoil missed opportunities:

Lake Association Feedback

- ▶ Other Successes:
 - ▶ Good to see these feedback opportunities / sessions with partners. Continue into the future.
- ▶ Other missed opportunities:

2021 CWC AIS Prevention Plan

- Next Steps

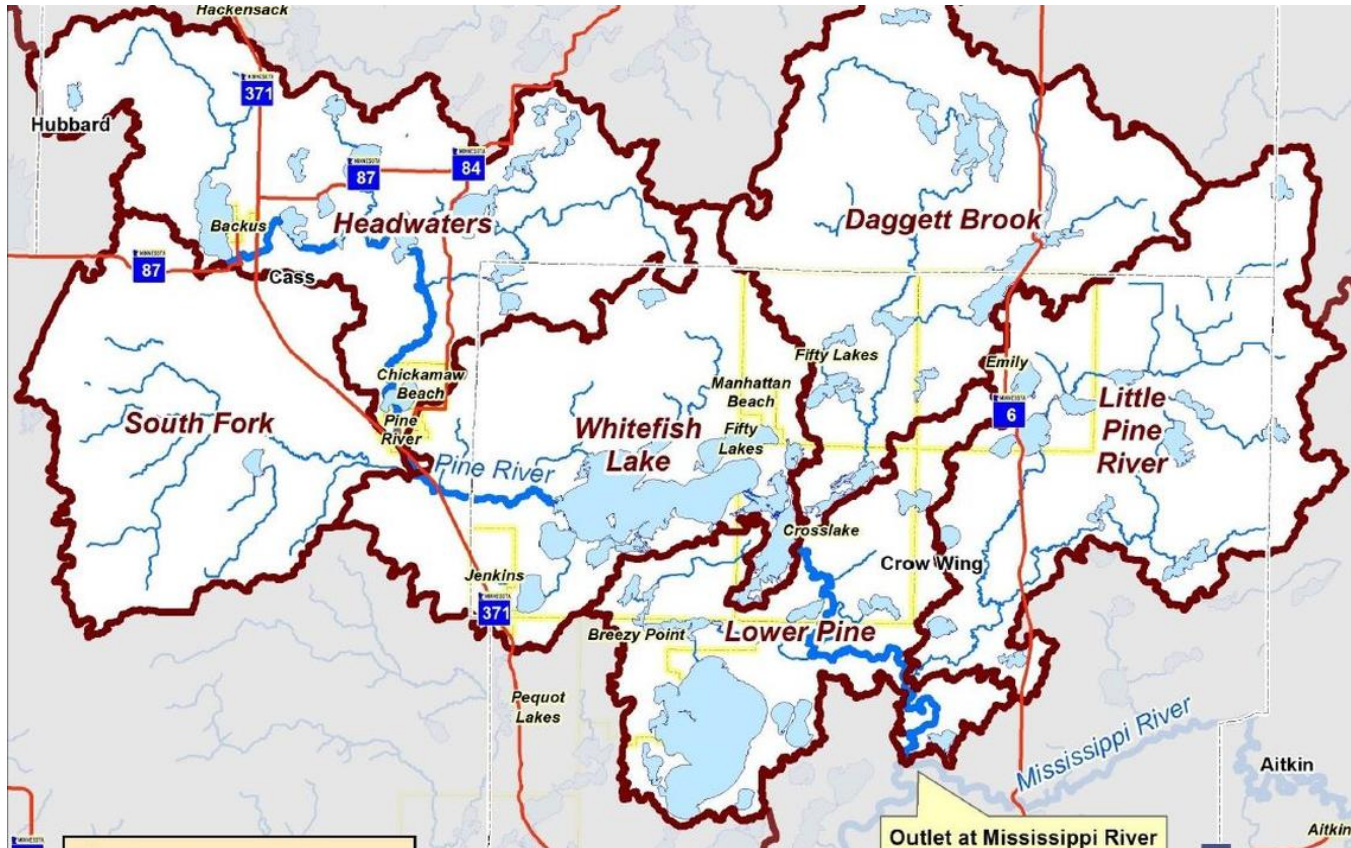
- ▶ The County was awarded a behavior change grant from the MN DNR to start a pilot program but that grant was delayed until 2021.
- ▶ September 2020 State of Minnesota allocated \$440,901 to CWC for local AIS prevention aid funds for 2021.
- ▶ October - 2020 AIS plan public feedback (today!).
- ▶ Early January. 20201 - Lake association feedback session (date TBD).
- ▶ January - 30 day public comment period on proposed CWC AIS 2021 plan.
- ▶ February County Board takes action on the AIS 2021 plan.

Pine River 1W1P

- ▶ Since spring, 2018, Crow Wing County, Cass County, Crow Wing SWCD, and Cass County SWCD have been leading an effort to develop the Pine River Watershed 1W1P.
- ▶ The Pine River Watershed is over 502,400 acres (785 sq. miles) and exists in 4 separate counties (Cass, Crow Wing, Hubbard, and Aitkin).
- ▶ 47.3% of Crow Wing County's land base exists within the Pine River watershed.
- ▶ Grant Funds in the amount of \$482,000 are available to implement the plan until December 31, 2022.
- ▶ Crow Wing SWCD is serving as the fiscal agent.
- ▶ Funds are through the Clean Water and Land Legacy Amendment appropriated to the Board of Water of Soil Resources from the State of Minnesota.

Pine River 1W1P

- ▶ The Pine River One Watershed, One Plan approved by the MN Board of Water and Soil Resources (BWSR) on September 25th, 2019 and adopted by the Crow Wing County Board at its January 7th, 2020 meeting.
- ▶ Work plan approved by the Crow Wing County Board in May, 2020.



Crow Wing County's role in the Pine River 1W1P

- ▶ Maintain and align forestry roads to minimize forest fragmentation.
- ▶ Implement near-shore stormwater infiltration BMPs on developed lots.
- ▶ Inventory storm water inputs draining into the Whitefish Chain.
- ▶ Replace culverts along specific roads to improve connectivity.
- ▶ Use the new NWI to prioritize wetlands for protection.
- ▶ Implement voluntary lake sweeps for SSTS inspections.

Crow Wing County's role in the Pine River 1W1P

- ▶ Conduct a records check to find developed lots that haven't had a recent inspection. Target those properties for incentives and assistance.
- ▶ Continue to enforce SSTS ordinances and update as needed.
- ▶ Provide free nitrate testing or screening to residents with private wells.
- ▶ Work to coordinate groundwater database management with the Counties, MDH and MDA.
- ▶ Seal 30 wells per year
- ▶ Continue to administer Shoreland Management Ordinances. Coordinate land use ordinances in the watershed where possible.

Crow Wing County's role in the Approved 2020-2022 Work Plan

- ▶ Identify incorrectly sized culverts causing water quality based issues. Cost share with Townships to replace culverts.
- ▶ Coordinate with Crow Wing SWCD to perform professional stormwater management trainings for staff.
- ▶ Install at least 16 individual stormwater and shoreline BMPs for Pig, Clamshell, and Big Trout Lakes
- ▶ Track projects performed in meeting the goals of the plan in a common GIS-based system.

Lake Improvement Districts (LIDs)

- ▶ Crow Wing County has 9 LIDs, created between 2004 and 2018.
- ▶ LID policies created to provide direction to staff and LID members on establishing, running, reporting on, and dissolving LIDs. The last LID policy revisions occurred in September, 2017.
- ▶ Initial feedback on draft LID policy revisions were discussed at the COTW in 2019 and additional feedback was received at the 9/8/2020 County Board meeting.
- ▶ County staff posted the existing and proposed LID policies on the County website and solicited feedback from the existing LIDs on 9/22/2020 with comment period ending on 10/20/2020 (apx. 29 days).
- ▶ Revisions reviewed by the Attorney's Office.
- ▶ At the end of the comment period, we received 15 comments from 9 individuals. The most common comments were the following:
 - ▶ Concerns about submitting the annual report by October 1st of each year.
 - ▶ Concerns about potential financial penalties for late or incomplete reports.
 - ▶ Significant concerns about LIDs directly receiving and managing their own finances.

Lake Improvement Districts (LIDs) - next steps

- ▶ Work with Attorney's and Administrative Offices to develop specific timelines guidance to transition to LID-managed finances
 - ▶ Discussion of "phase-in" timelines, etc.
- ▶ All other parts of the policy, effectively implemented on January 1, 2021 (i.e., annual report deadlines, donations accepted by LIDs, etc.)

Crow Wing County and SWCD PRAP process - next steps

- ▶ The Minnesota Board of Water and Soil Resources (BWSR) performed an “audit” of the County’s water planning and Wetland Conservation Act (WCA) duties and obligations in late 2018, early 2019.
 - ▶ Part of the State’s normal routine audit of all Counties approximately every 10 years (or so) as dictated by Statute.
 - ▶ Results indicate that:
 - ▶ County is meeting or exceeding all minimum required obligations / timelines for both WCA and water planning efforts.
 - ▶ County has a strong relationship with SWCD and needs to continue having one moving forward with upcoming 1W1P processes forthcoming.
- ▶ Three Joint Recommendations were laid out in the plan by BWSR moving forward:

Crow Wing County and SWCD PRAP process - next steps

- ▶ Recommendation #1: Use prioritized, targeted, and measured criteria moving forward for assessing progress towards meeting water planning goals
- ▶ Recommendation #2: Structure websites to report progress and trends towards meeting water planning goals.
- ▶ Recommendation #3: Conduct a strategic assessment of organization capacity of Land Services (CWC) and SWCD to determine the appropriate division of responsibility and funding programs such as local water planning and WCA.

PRAP Recommendation #3: Organizational capacity

- ▶ Hired Region 5 (Tad Erickson) to facilitate a series of coordinated meetings with Land Services and SWCD to:
 - ▶ Identify overlaps and gaps in services performed by each entity.
 - ▶ Identify what is working well and where opportunities for improvements in services to both internal and external customer service.
 - ▶ Identify specific outcomes and a path for moving forward toward achieving operational changes to better serve the goals of each entity.
 - ▶ Attendees: One County Commissioner, one District Manager, and both SWCD and Land Services staff leadership.

PRAP Recommendation #3: Organizational capacity

- ▶ So far, six (6) broad areas of opportunities for increased collaboration and capacity by both entities have been identified in draft form.
- ▶ One or two more meetings have been scheduled.
- ▶ Expected result:
 - ▶ Agreement by decision makers on roles and responsibilities of each entity moving forward.
 - ▶ Potential framework of an “agreement” including specific lists of projects SWCD can assist Crow Wing County with implementing.
 - ▶ Better framework for coordinated roles and responsibilities.
 - ▶ Completion of the process is expected by January, 2021

Wrap-up and Final Questions



Jacob Frie
Environmental Services Supervisor
Land Services Department
322 Laurel Street, Suite 15
Brainerd, MN 56401
Office: (218) 824-1124
www.crowwing.us

Nicole Erickson
Environmental Services Specialist
Land Services Department
322 Laurel Street, Suite 15
Brainerd, MN 56401
Office: (218) 824-1142
www.crowwing.us